

CITY OF NANAIMO

BYLAW NO. 7172

A BYLAW TO AUTHORIZE THE DISPOSAL OF A PORTION OF COMOX PARK IN
EXCHANGE FOR PROPERTY LOCATED AT 6780 DICKINSON ROAD

WHEREAS, pursuant to Section 29 of the *Community Charter*, land in a municipality that is dedicated to the public for the purpose of a park by a subdivision plan deposited in the land title office is vested in the municipality for that purpose;

AND WHEREAS, pursuant to Section 27(2)(a) of the *Community Charter*, a council may, by bylaw adopted with the approval of the electors, dispose of a portion of such park land in exchange for other land suitable for a park;

AND WHEREAS Council of the City of Nanaimo wishes to dispose of that 0.604 hectare portion of the land dedicated as park by Plan 584 shown outlined in bold on the survey plan attached to this Bylaw as Schedule "A" (the "Closed Park") in exchange for that property legally described as PID: 023-982-608, Lot A District Lot 53 Wellington District Plan VIP66439 (the "New Park");

NOW THEREFORE the Municipal Council of the City of Nanaimo in open meeting assembled enacts as follows:

1. The City of Nanaimo is hereby authorized and empowered to dispose of the Closed Park and to exchange the Closed Park for the New Park with the registered owner of the New Park.
2. The Mayor and Corporate Officer are authorized to execute all documents necessary to carry out the completion of the park exchange authorized by this bylaw.
3. This Bylaw shall come into full force and effect on the date of adoption.
4. This Bylaw may be cited as "Comox Park Exchange Bylaw 2013 No. 7172".

PASSED FIRST READING 2013-MAY-13

PASSED SECOND READING 2013-MAY-13

PASSED THIRD READING 2013-MAY-13

An alternative approval process in relation to this Bylaw was provided in accordance with the requirements of section 86 of the *Community Charter* and the elector response was certified as not having exceeded 10% of the electors of the City of Nanaimo on the 5th day of July, 2013.

ADOPTED 2013-JUL-22

J. R. RUTTAN
MAYOR

K. KING
CORPORATE OFFICER

SCHEDULE "A"


CLOSED PARK

PLAN EPP30249

**REFERENCE PLAN TO ACCOMPANY BY-LAW
NO. 7172, CLOSING PART OF COMOX
PARK, SECTION 1, NANAIMO DISTRICT**

PURSUANT TO SECTION 120 OF THE LAND TITLE ACT & SECTION 27 OF COMMUNITY CHARTER
BCGS 92G-011

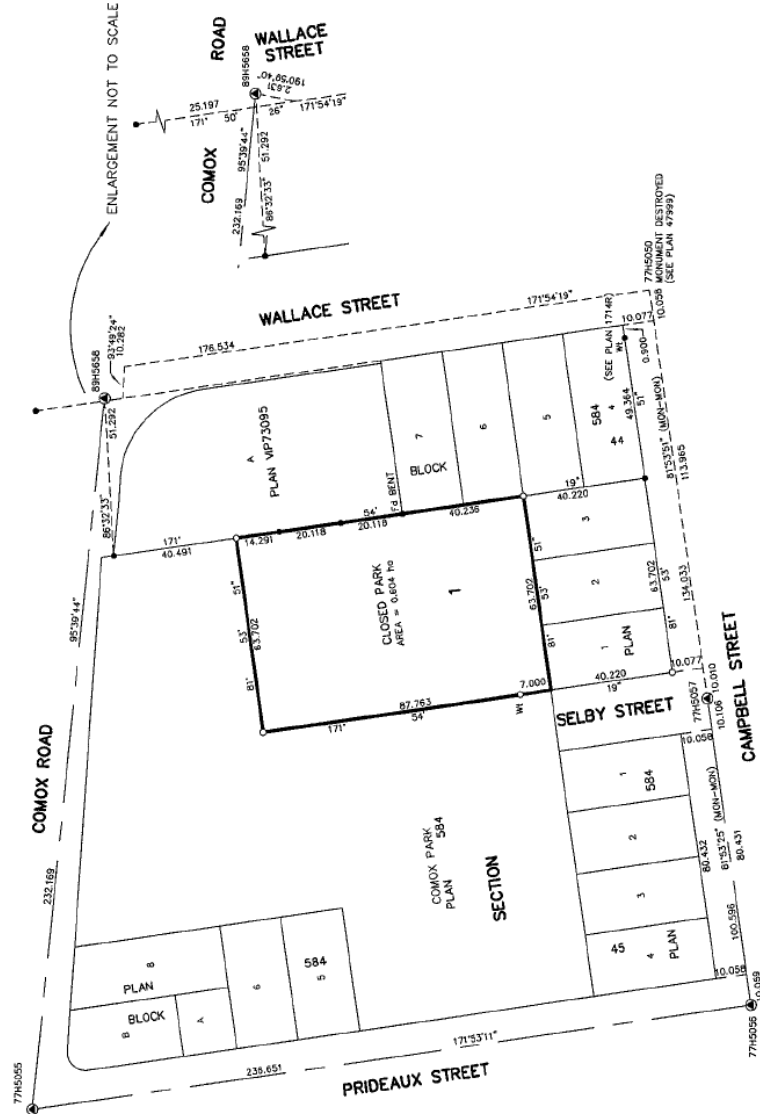
THE INTENDED PLOT SIZE OF THIS PLAN IS 540 mm
IN LENGTH AND 381 mm IN WIDTH. THIS PLAN IS
PLOTTED AT A SCALE OF 1:1000
(ALL DIMENSIONS ARE IN METRES)



LEGEND

INTEGRATED SURVEY AREA NO. 20, CITY OF NANAIMO,
AND IS (C-345)
GROUND BEARINGS ARE DERIVED FROM OBSERVATIONS BETWEEN
CONTROL POINTS 77H5056, 77H5057 AND
88H5658
THIS PLAN SHOWS HORIZONTAL GROUND-LEVEL DISTANCES
UNLESS OTHERWISE SPECIFIED. TO COMPUTE GRID DISTANCES,
APPLY THE CORRECTION FACTOR OF 0.999570 WHICH HAS BEEN DERIVED
FROM ABOVE MENTIONED GEODETIC CONTROL MONUMENTS
• DENOTES STANDARD IRON POST FOUND
○ DENOTES STANDARD IRON POST SET
⊙ DENOTES CONTROL MONUMENT

NOTE: THIS PLAN SHOWS ONE OR MORE WITNESS POSTS
WHICH ARE NOT SET ON THE TRUE CORNER(S)



THIS PLAN LIES WITHIN THE REGIONAL DISTRICT OF NANAIMO
THE FIELD SURVEY REPRESENTED BY THIS PLAN WAS COMPLETED ON
THE 9TH DAY OF APRIL, 2013
BRIAN DAVID WARDROP, B.C.S.

MELHANNY ASSOCIATES
100-1000 WESTVIEW ROAD
SUITE 101, 1351 ESTEVAN ROAD
NANAIMO, B.C. V9S 3Y3
OUR PHONE NO. 250-716-3339
OUR FAX NO. 250-716-3339